

# 2022 Water Connection Charge (WCC) Study

June 28, 2022  
Brian Rickards

# Today's Agenda

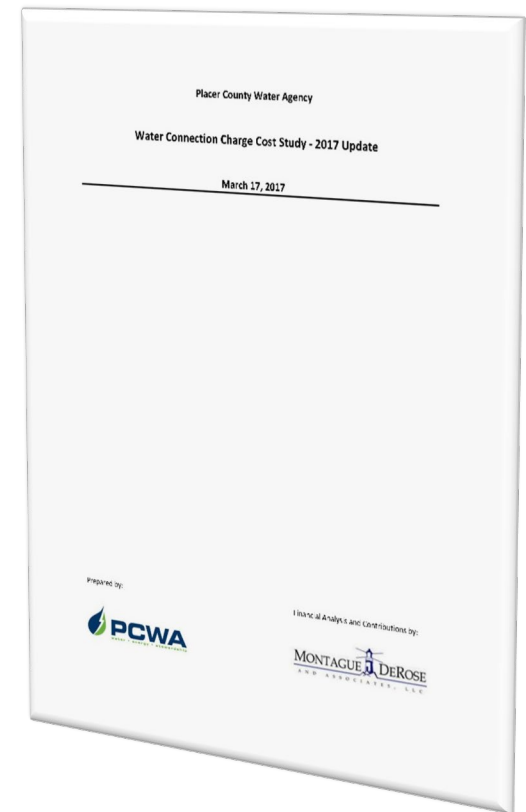
- Opening Remarks
- 2017 WCC Study Overview
  - Methodology
  - Projects
  - Findings
- 2022 WCC Study
  - Schedule
  - Assumptions
  - Next Steps

# WCC Development Overview

- PCWA's WCC has been based upon a model that takes into consideration:
  - Available capacity for sale
  - Water connection demand (anticipated connections/absorption)
  - Capital Improvement Plans (new infrastructure to serve available capacity)
  - Debt issuance to meet cash flow needs
- WCC updates every 5± years, or as needed.

# 2017 WCC Overview

- Last comprehensive update (which included financial model updates) was completed in 2017, previously was 2014
- 30 MGD Ophir Water Treatment Plant program
  - 15 mgd wholesale, 18 mgd retail
- Results from the 2017 Study:
  - Retail WCC totaling \$18,867
  - Wholesale WCC totaling \$15,295
  - Partnership option totaling \$11,557
  - CAW transmission surcharge of \$1,152 under the wholesale WCC



# Current WCC Rates (Effective Jan 2022)

- Retail Residential
  - 1 Equivalent Dwelling Unit (EDU) = 1 Unit of Capacity (UOC)
  - 1 UOC = 1,150 GPD Max Day Demand (MDD)
    - 1,000 UOCs=1.15 MGD=2,500 MDUs=1,667 1/10 Acre SFR
  - WCC Rates are updated by ENR annually

**Residential Assessment of UOC & WCC:**

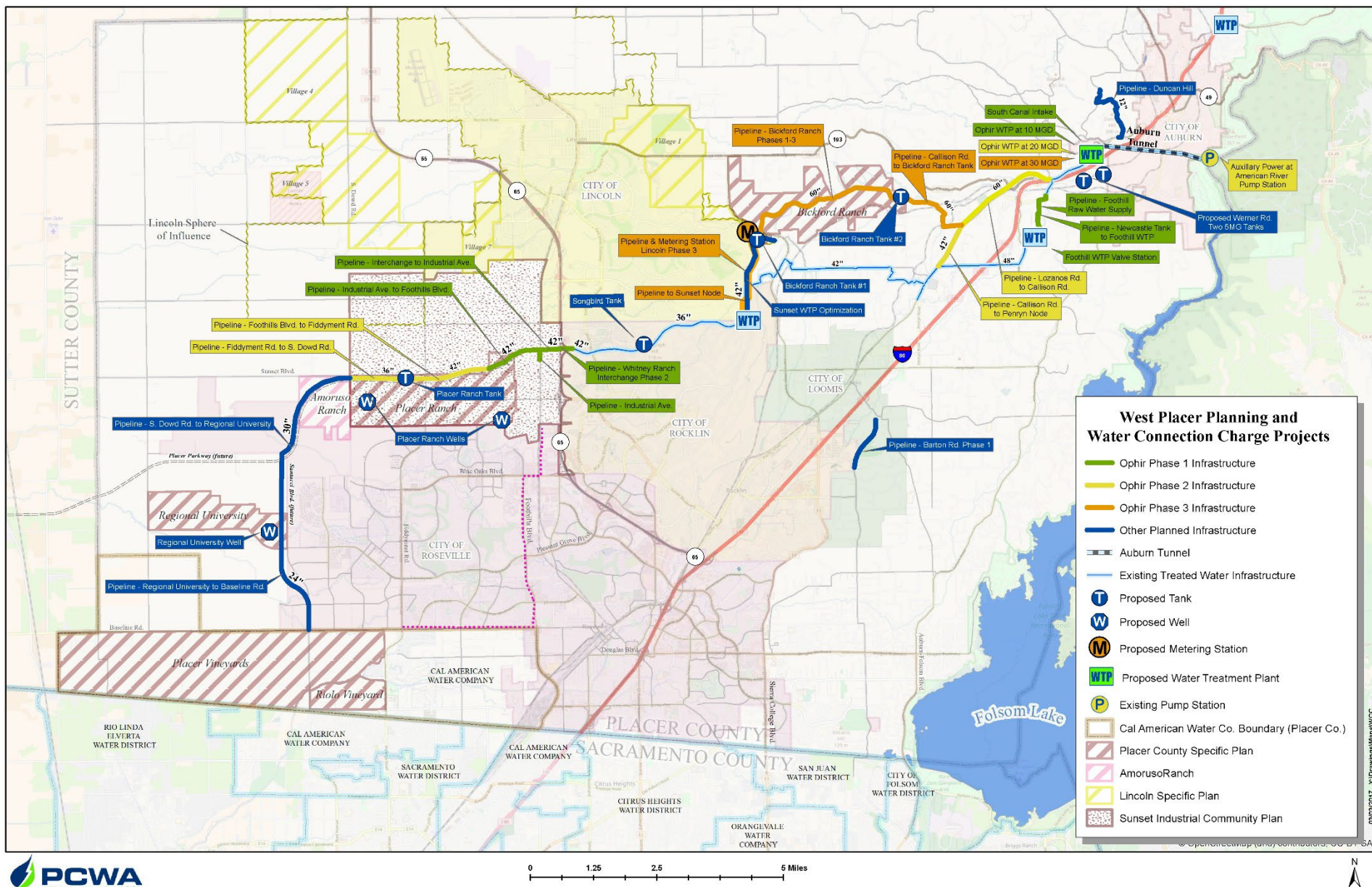
Lot Size (Square Feet)	Assessed UOCs	Assessed WCC	Assessed Meter Size <sup>(2)</sup>
MDU <sup>(1)</sup>	0.4	\$7,995	N/A
≤ 2,900	0.4	\$7,995	5/8"
2,901 ≤ 4,400	0.6	\$11,992	5/8"
4,401 ≤ 5,500	0.7	\$13,991	5/8"
5,501 ≤ 7,000	0.9	\$17,988	5/8"
7,001 ≤ 10,000	1.0	\$19,987	5/8"
10,001 ≤ 17,000	1.2	\$23,984	3/4"
17,001 ≤ 35,000	1.5	\$29,981	3/4"
35,000 <	2.5	\$49,968	1"

**Footnotes:**

(1) Multi-Dwelling Unit (MDU) UOC assessment is per unit and for indoor water use only. A separate metering for outdoor water use is required.

(2) Assessed meter sizes are for monthly billing purposes only. Residential meters may be upsized up to a 1" meter to accommodate fire sprinkler systems requirements. The meter set fee of actual meter size installed shall be used when upsized for fire sprinkler systems.

# 2017 Water Connection Charge Projects



# 2022 WCC Study

- Tentative Schedule:
  - WCC overview (today)
  - Stakeholder Workshop (July 25, 2022) - invite to follow
    - Program capacity
    - Absorption
    - 2022 Project list and timing
  - Other Workshops
    - Cash flow
    - Financial Analysis
    - Results
  - PCWA Board (target early 2023)



# Closing Remarks

- Confirm Stakeholder List
- Feedback/Input
  - Overall process/timeline
  - Meeting format(s)
- 2022 WCC documents are available at: <https://www.pcwa.net/about-pcwa/environmental-planning>



# Questions, Comments, and Information

Brian Rickards

Planning and Development Services Manager

[brickards@pcwa.net](mailto:brickards@pcwa.net)

530-823-4845